



## PROCÉDURE DE MISE A JOUR 2019 LD90



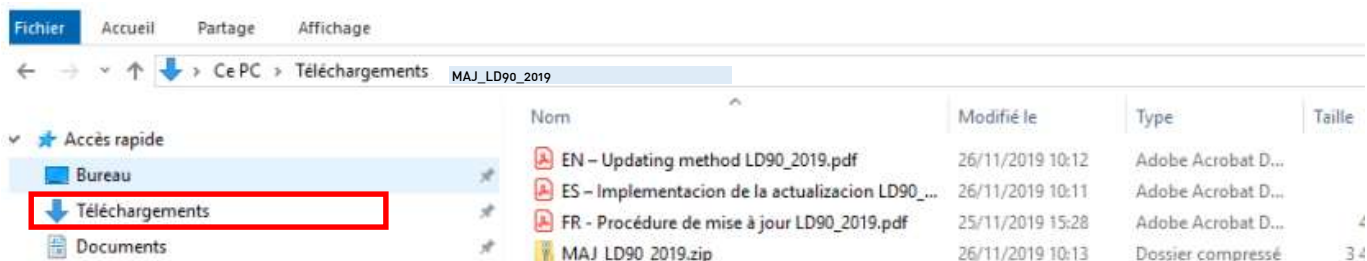
### Download:

Download from the following web page: <http://www.reskal.com/sav/> the latest update for the LD90 device.

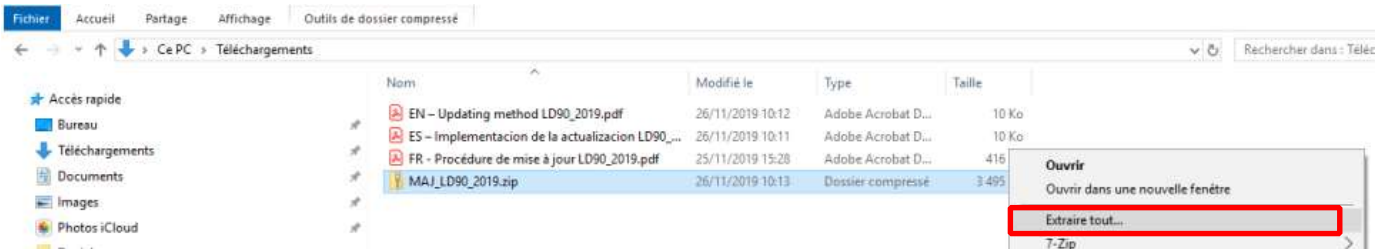
**Warning There are several versions of the LD90 model.  
Do not update on "BC930" models  
Number on the left edge of the screen:**



- 1- Select the LD90 detector update.
- 2- Save it on your PC.

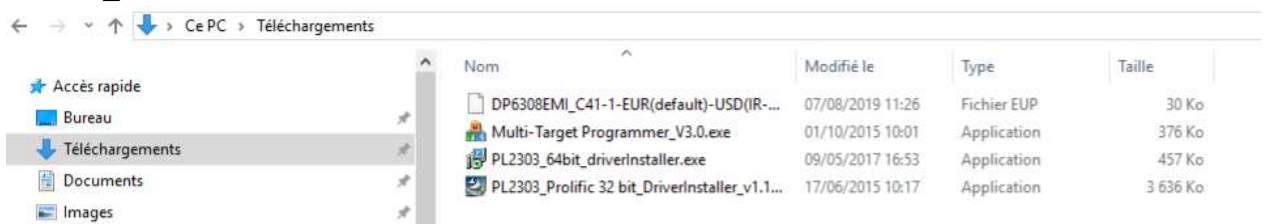


- 3- Among the downloaded files (3 pdf of the installation procedure in different languages and a folder), the downloaded file is compressed. It must be decompressed before updating. To do this, right click on this folder and click on "Extract all".



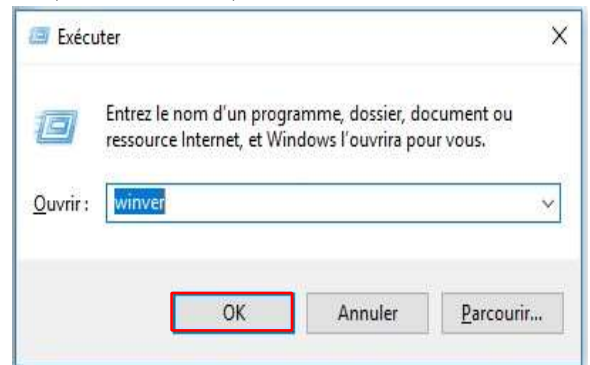
- 4- Once the folder is uncompressed, open it with a double-click. It has 4 files:

- Multi-Target Programmer\_V3.0
- PL2303\_Prolific\_32 bit\_DriverInstaller\_v1.11.0.exe
- PL2303\_64bit\_driverInstaller.exe
- DP6308EMI\_C41-1-EUR(default)-USD(IR-MEGA32 2019-07-05).EUP.



- 5- Identify the version of Windows that you are using:

To do this, simultaneously press the Windows key on the keyboard (usually bottom left, between Ctrl and Alt keys) and the R key then type "winver" and confirm with "Enter" (or click "OK")



6- Then identify the operation of your PC (32 or 64 bits):

#### Windows 10:

Right-click on the Windows logo at the bottom left and choose "Settings" / "System", then "System Information" and look at "System Type".



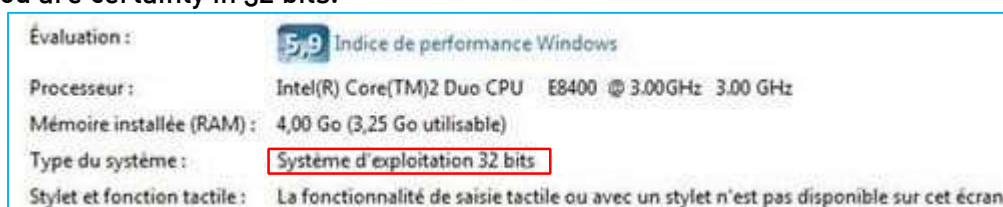
#### Windows 8:

Place your cursor on one of the corners of your screen to open the "charms bar" then go to "Settings", select "PC info" then "Under System".



#### Windows 7 and earlier:

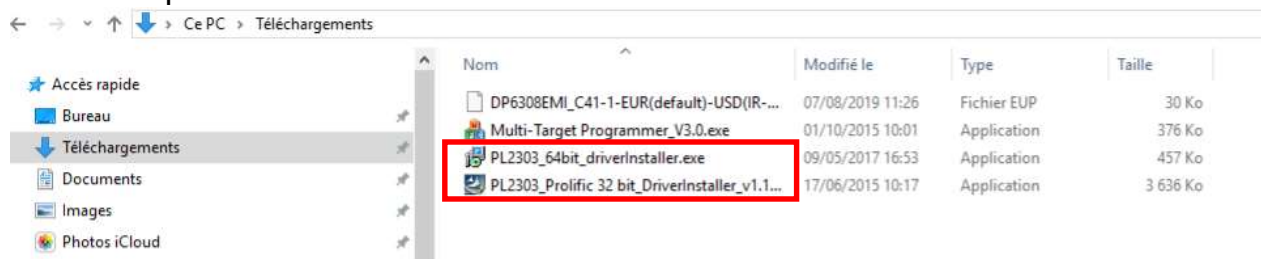
Click on the "Start" button, go to "Control Panel", then in "System and Security", go to "System". If nothing is mentioned, you are certainly in 32 bits.



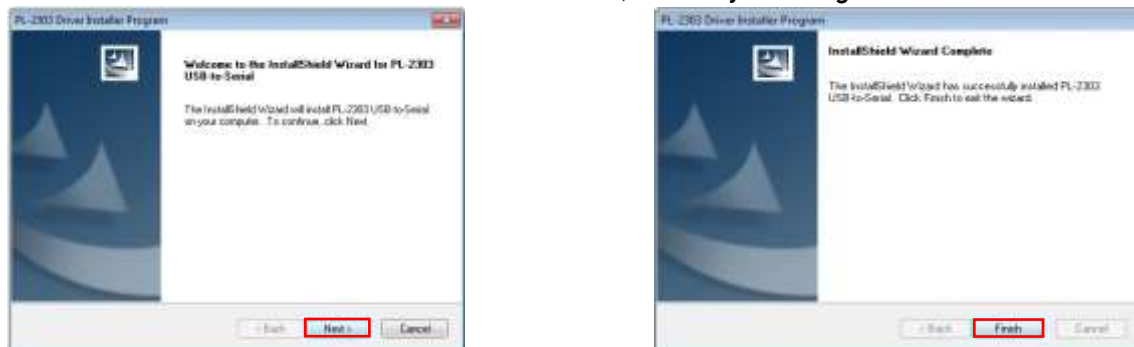
#### Choice of the software according to the PC

PC	Software to install
32 bits	PL2303_Prolific_32 bit_DriverInstaller_v1.11.0.exe
64 bits	PL2303_64bit_driverInstaller.exe

- 7- Double-click on the appropriate software for your hardware (see table above) and follow the installation procedure until the end.



- 8- Click on "Next" and when the installation is finished, close by clicking on "Finish".



- 9- Connect the LD 90 to your computer using the specific cable (ref 9996-172).

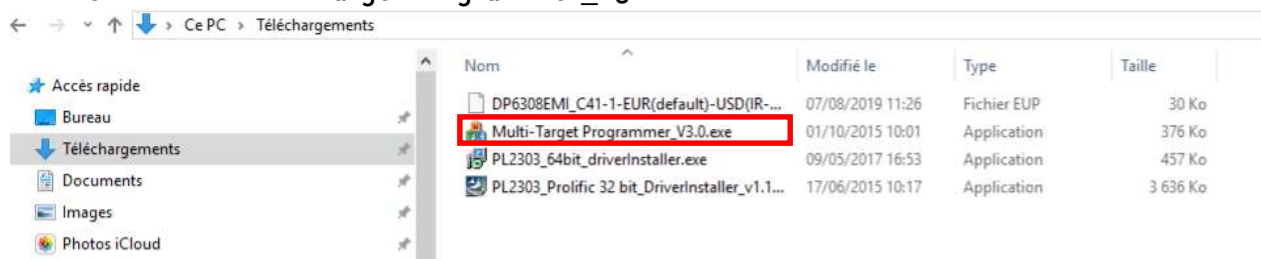


- 10- Put the LD90 device in "reception" mode.'

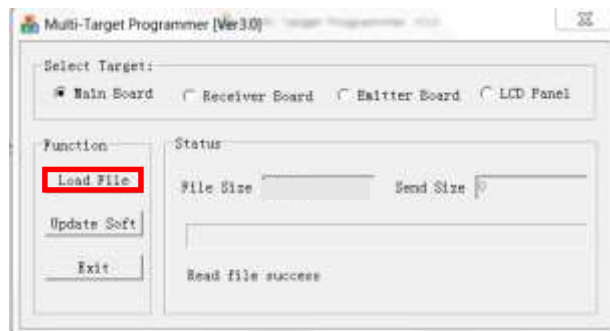
To do this, press "Reset" and turn on the power. "Downloading please wait ..." appears on the screen. Release the "Reset" key.



- 11- Double-click on "Multi-Target Programmer\_V3.0".

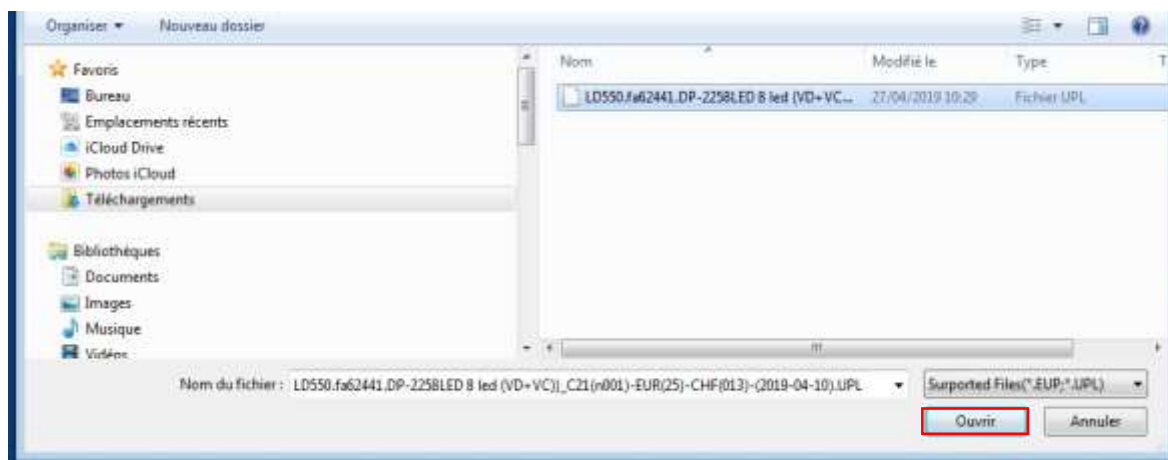


12- Click on "Load File".

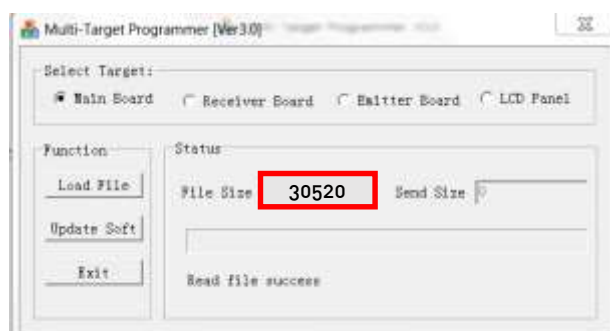


13- A new window opens. Choose the folder where the software will be installed (By default, downloaded items appear in the "Downloads" folder).

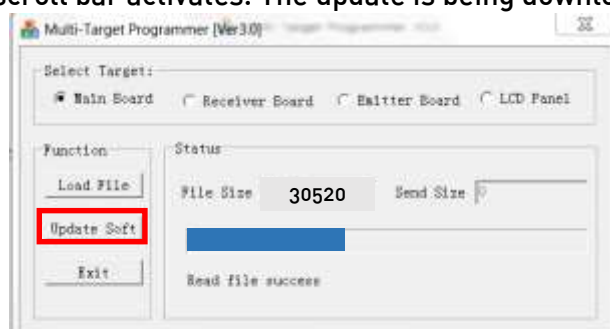
Then select the folder "DP6308EMI\_C41-1-EUR(default)-USD(IR-MEGA32 2019-07-05).EUP"



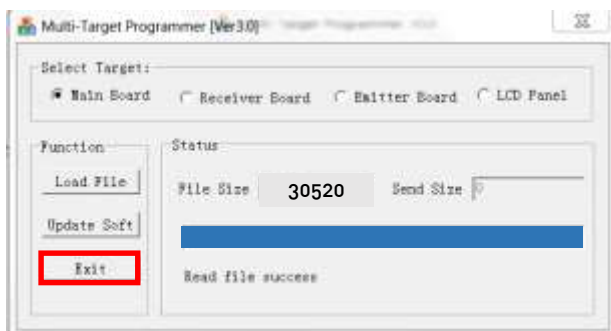
14- The window closes. In the "Multi-Target Programmer [Ver3.0]" window, "Status" box, "File Size", the number 30520 is displayed.



15- Click on "Update Soft". The scroll bar activates. The update is being downloaded.



16- At the end of the download, click on "Exit".



17- Switch on the detector. Code C41 should be displayed.

18- Bravo! The update is done.

19- Take a test with new notes of 5, 10, 20, 50, 100 and 200 euros.



If despite our explanations, you have difficulties to carry out the update, do not hesitate to contact our experts who can remotely, take the hand on your PC and carry out these operations for you:  
**SAV RESKAL**

Tel. : +33 (0)4.73.51.78.20 ou +33 (0)4.73.51.78.15

Mail : [sav@safetool.fr](mailto:sav@safetool.fr) ou [sav@reskal.com](mailto:sav@reskal.com)

Address : SAFETOOL SAS - ZI chez cotte - 63650 La Monnerie-le-Montel - France